

3DiscClinic

4.0 Update

Building on the success of Fly^{AI} which has significantly simplified the scanning experience for our users, we are now reaching greater heights with the 4.0 release with increased stability and more robust software to guide you on your journey.

Experience the new update and new tools by installing this release now!

365 Herndon Pkwy #18
Herndon, VA 20170,
USA

191, avenue Charles de Gaulle,
92200, Neuilly-sur-Seine,
France

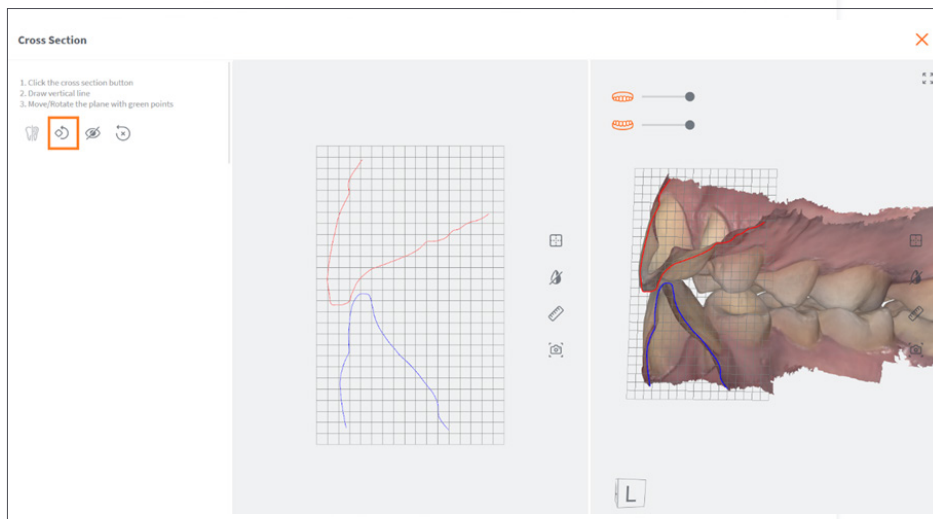
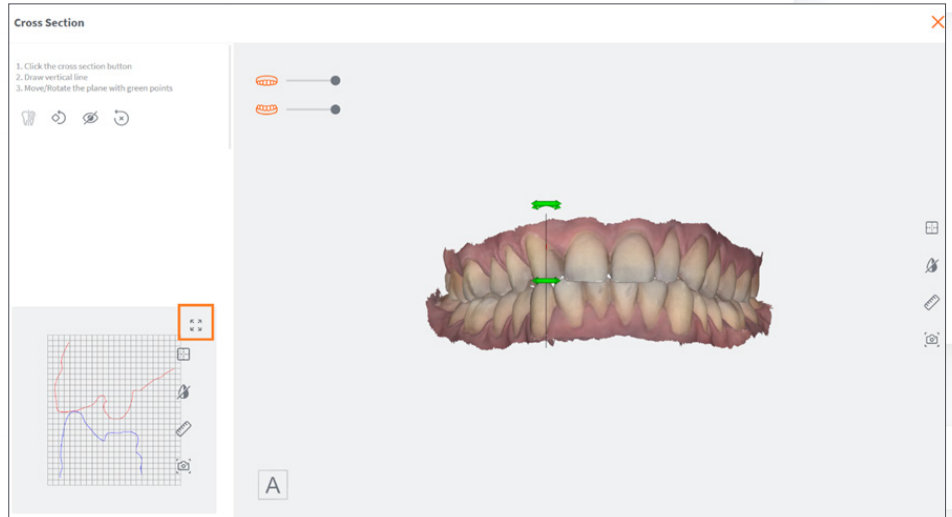
info@3disc.com
www.3DISC.com

New Features

3DiscClinic

CROSS SECTION TOOL

Enlarge the 2D image by clicking the “maximize icon” located in the top-right corner of the 2D image. This action will display the 2D and 3D images side by side.



Various tools on the cross-section bar are designed to enhance your 3D view by allowing you to cut the model along the cross-section line you have drawn.

3D VIEWER

3D Viewer is now available. Drag&-Drop any file directly into your viewer. This enables you to view easily any data sets exported without having to re open the case.



User Interface Improvements

3DiscClinic

Simplified & Intergrated Experience

An overall simplified and integrated experience with the updated version of the review steps.

Update of Available Indications

Updated “Indications” to allow better management of customized indications when upgrading from different versions of the software. Based on feedback from users the “temporary” indication has been removed.

Direct Link to 3Disc Online Help

3D Settings directly link to online help to provide better explanation of the 3D settings. However, for the majority of users the default settings are recommended.

Smile Design

For OVO-Users (with Smile Design License) it now supports importing images directly from your patient file and sending them to Smile Design. This leads to simpler management of data and streamlined communication between the modules.

User Log-In

Improved management of user login when username or password un available for better clarity.

Update to Buccal Monitoring

Buccal Monitoring now saves the last check from same patient. This enables better preparation and presentation of results to the patient.

Formlabs™ Integration

Update to support version 3.33 of the PreForm software from Formlabs. This option is visible on the review page for users who have installed the Preform software.

Languages & Translations

Improvements in translations and the addition of Czech language to the system.

Update to Margine Line Tool

Margin Line Tool has been updated to enable more precise placement of the points and the ability to delete the last one added with the ‘del’ key.

Simplified Selection for Full Arch Cases:

For full arch indication it is no longer necessary to select each tooth. It is now possible with one-click to select the full arch.

3cm Ruler

Addition of a ruler on the review step to facilitate better analysis and communication. The 3 cm ruler is captured in the screenshots which can be added to the report.

Updated 3D Buttons

For a more intuitive and user-friendly experience, rediscover the review pages with a harmonized interface for all steps from clinical to review tools.

Enhanced User Experience

When going beyond 5000 images while scanning an arch, warning message has been changed and data sets will be finalized in standard resolution.

Review Mode

Option added to enable the software to be installed on a computer without the necessary Nvidia graphics card for case review only.

Supported 3rd Party Platforms

Improved connectivity with 3rd party platforms, including ClinuxCAD,Reveal, Evident, EasyRX and others. (Subject to regional availability.)

User Interface Improvements

Scan&Tell

Patient List Feature

Introducing a new patient list feature for improved organization and simpler review of cases for a single patient (available in Scan&Tell App-Settings)

Camera Button

In the upper right corner when a patient is selected without any associated cases.

“Preferred Start Page”

For a personalized user experience. (available in Scan&Tell App-Settings)

3DiscClinic Bug Fixes

- Fixed a bug with the occlusal distance map.
- Fixed a bug causing the scanner to freeze during the bite blocking process.
- Fixed a bug that prevented users from exiting the patient database.
- Fixed crashes that were causing the software to crash unexpectedly.
- Improved behavior when closing the software
- Fixed a bug that prevents 3D data sets from being correctly displayed on iPad.

3DISC Support Tools

- Simplified one click data collection.
- Team Viewer QS desktop shortcut.
- Data Backup and Raw Data Cleaning workflow adjusted.

365 Herndon Pkwy #18
Herndon, VA 20170,
USA

191, avenue Charles de Gaulle,
92200, Neuilly-sur-Seine,
France

info@3disc.com
www.3DISC.com

